

# Patty-O-Matic

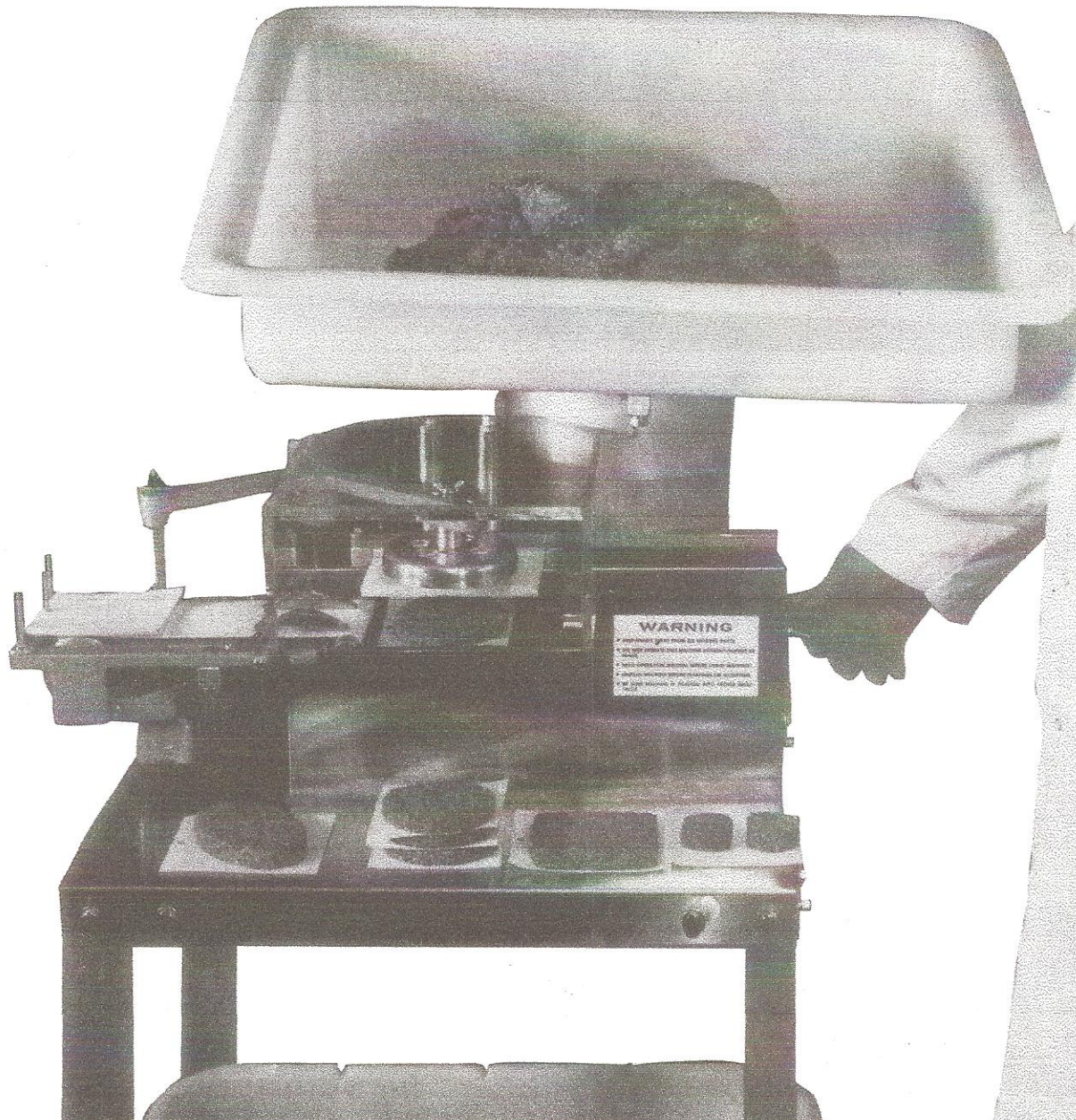
U.S. PATENTED

MODEL 445

FOOD PORTIONING AND FORMING MACHINE

EXCLUSIVE PATENTED  
FEEDING METHOD

MANUAL





TRIED AND PROVEN

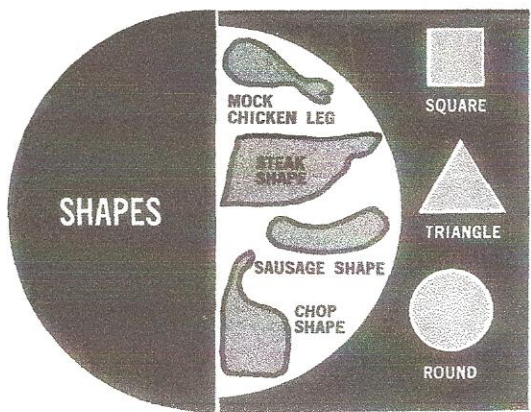
# Patty-O-Matic

UNIQUE MEAT FEED PRODUCES JUICIER PATTIES

MODEL 445

FOOD PORTIONING

AND FORMING MACHINE



The Patty-O-Matic modern molding machine will mold any shape patty, not only the standard round, square or oval shapes. Mold plates for the Patty-O-Matic come in thicknesses ranging from 3/16" to 3/4" — and with simple adaptation — patties can be molded thicker than 3/4". A separate spacer is required for each different thickness of mold plate. The machine is capable of molding a fraction of an ounce to one pound at a time. Machine comes with one standard mold plate and a spacer.

The Patty-O-Matic takes any drilled and cut paper, single or double sheets. We recommend the Patty-O-Matic high quality paper for best results in your machine and with your product.

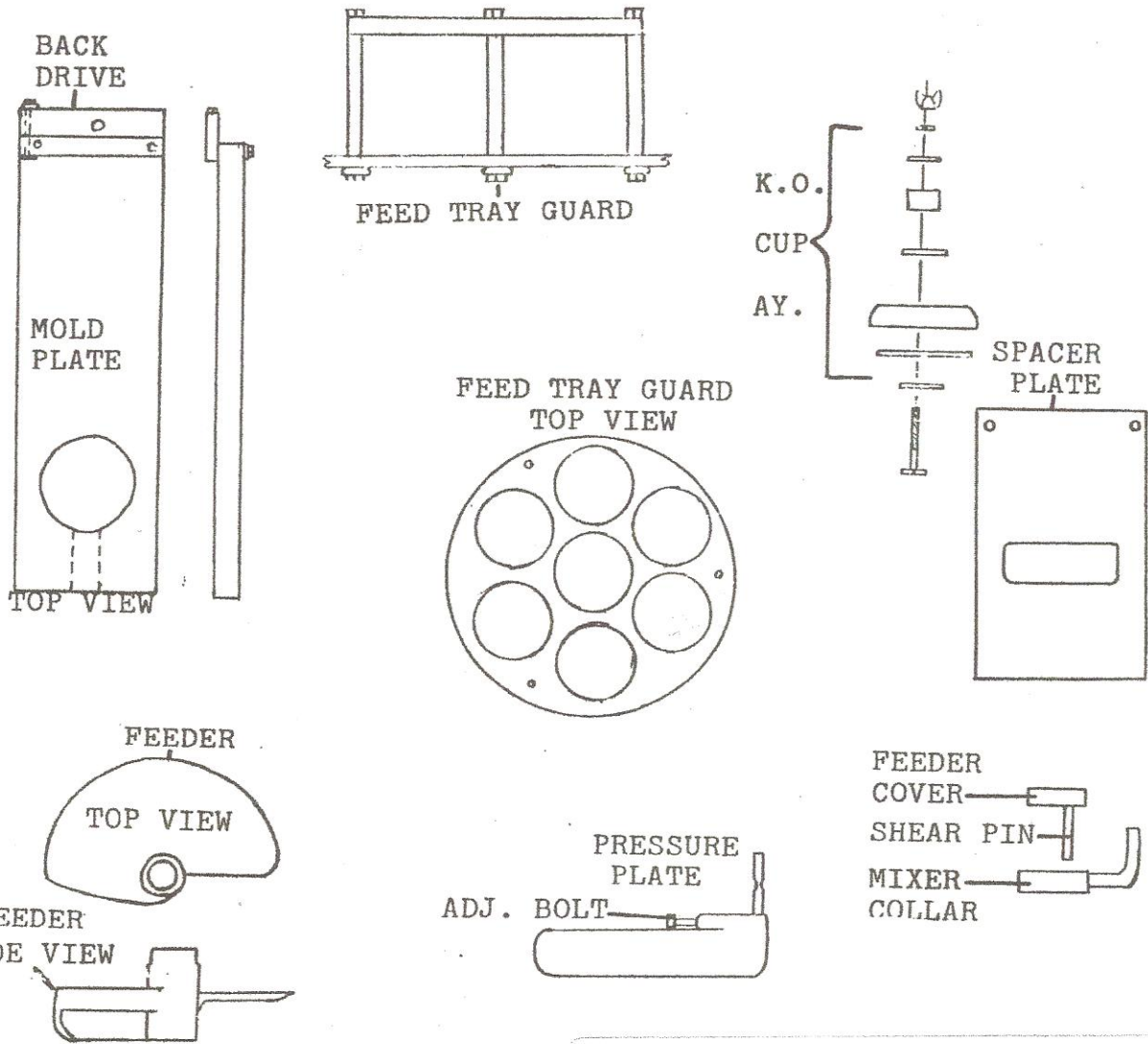
The Patty-O-Matic is normally equipped with a 1/2 H.P. Capacitor type, single phase, 60 cycle motor. This single speed motor is furnished in either 110 or 220 volt models. Three phase, direct current, 50 or 25 cycle motors can be supplied.

The Patty-O-Matic, after years of development, is designed for the smallest or largest operation. Since all operations do not require a mobile stand, conveyor, counter, large hopper, or paper attachment, models are available without these accessories. Accessories can be added easily as the need arises.

APPROXIMATE SIZE OF PATTY (DIAMETER)

Thickness	16 @ 1.0z	15 @ 1.07oz	14 @ 1.14oz	13 @ 1.23oz	12 @ 1.33oz	11 @ 1.46oz	10 @ 1.60oz	9 @ 1.78oz	# of Patties Per Pound
3/16	3-11/32		3-19/32		3-7/8		4-1/4	4-15/32	
1/4	2-7/8		3-3/32		3-11/32		3-21/32	3-27/32	
5/16	2-21/32		2-27/32		3-1/32		3-11/32	3-1/2	
3/8	2-3/8		2-17/32		2-23/32		2-31/32	3-5/32	
1/2	2-1/8		2-9/32		2-15/32		2-11/16	2-27/32	
5/8	1-15/16		2-1/16		2-7/32		2-7/16	2-9/16	
3/4	1-3/4		1-29/32		2		2-7/32	2-11/32	
	8 @ 2.0z	7 @ 2.29oz	6 @ 2.67oz	5 @ 3.2oz	4 @ 4.0z	3 @ 5.0z	3 @ 5.33oz	2 @ 8.0z	
3/16	4-3/4								
1/4	4-3/32	4-3/8	4-23/32		5-3/4				
5/16	3-23/32	3-31/32	4-5/16	4-11/16	5-1/4				
3/8	3-11/32	3-9/16	3-27/32	4-7/32	4-23/32				
1/2	3	3-7/32	3-15/32	3-13/16	4-1/4	4-3/4	4-29/32		
5/8	2-23/32	2-29/32	3-5/32	3-7/16	3-27/32	4-5/16	4-7/16		
3/4	2-15/32	2-21/32	2-27/32	3-1/8	3-1/2	3-29/32	4-1/32	5	
SPEC. SHAPES SQUARE · OVAL · STEAK SHAPE · CHOP SHAPE · TRIANGLE · MOCK CHICKEN LEG									

The Patty-O-Matic automatic Model 445 was designed to only mold and paper meat patties. Place the product in the feed tray, then push product through and under feed guard, being careful not to put fingers or hands under the guard. You are putting product into the hopper to be processed into patties. The Model 445 will mold, paper and stack the finished patties. This Model 445 is designed for easy operation and cleaning. Become familiar with this manual and your machine shall have a long life.



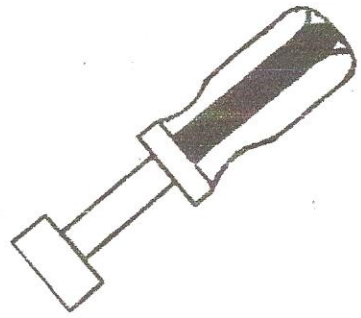


Prior to using the Model 445 and after each use the following parts should be cleaned/sanitized:

- Mold Plate
- Spacer Plate
- K. O. Cup
- Hopper

- Feeder
- Feed Tray & Guard
- Mold Plate Guard
- Pressure Plate

In order to disassemble for cleaning, use the disassembly tool and remove 5 bolts: 1 in the hopper above the feeder and 4 mounting the hopper to the machine. This will allow the removal of all upper parts.



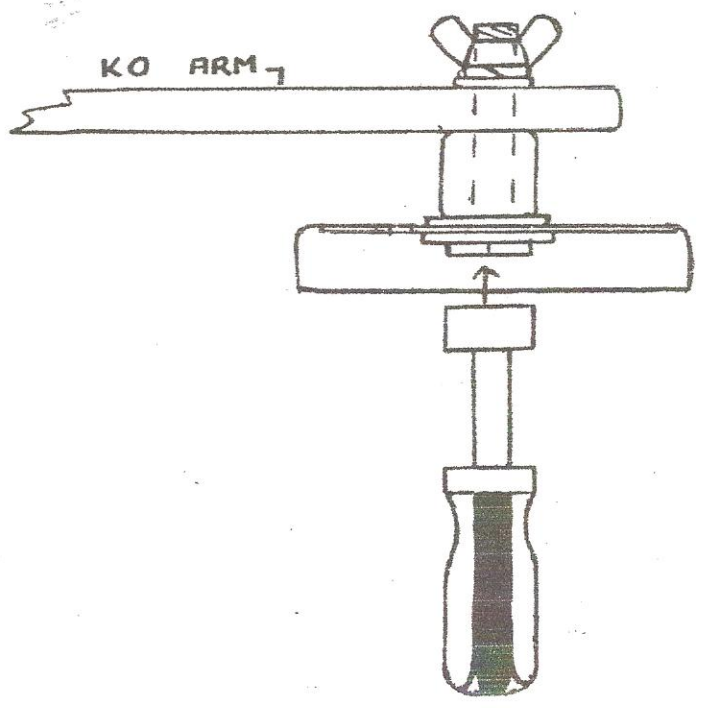
NEVER START THE MACHINE WITH THE HOPPER OFF!!!

NOTICE: A 6th bolt with finer threads is also fastened to the hopper. Next to this bolt is stamped an "X". This bolt does not need to be removed, its purpose is to hold the spacer plate in place.

The KO Cup is removed by holding the bolt inside the cup with the disassembly tool, and turn the wing nut counterclockwise. After cleaning, make sure the K O Cup is centered inside the mold plate cavity with the mold plate in the forwardmost position.

DO NOT DISASSEMBLE THE MIXER COLLAR & STEM FROM THE FEEDER. This is not necessary. Improper assembly of the mixer collar on the feeder could cause feeding difficulties.

PROPER KO CUP ASSEMBLY



Remove the spacer plate from above the mold plate. NOTICE—two round holes in the spacer plate are located toward the front of the machine.

To remove the mold plate, unscrew the "T" bolt located at the rear and underside of the mold plate. This bolt goes through a slot in the connecting arm which moves the mold plate when the machine is in operation.

After cleaning, reverse the above procedure to reassemble. The 5 bolts need only to be hand tightened with the tool provided.

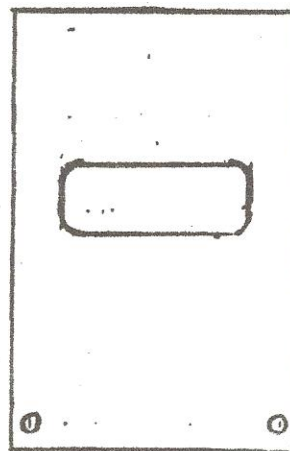
The following directions are only necessary for first time set-up or for replacing parts,

#### MOLD PLATE GUARD ASSEMBLY

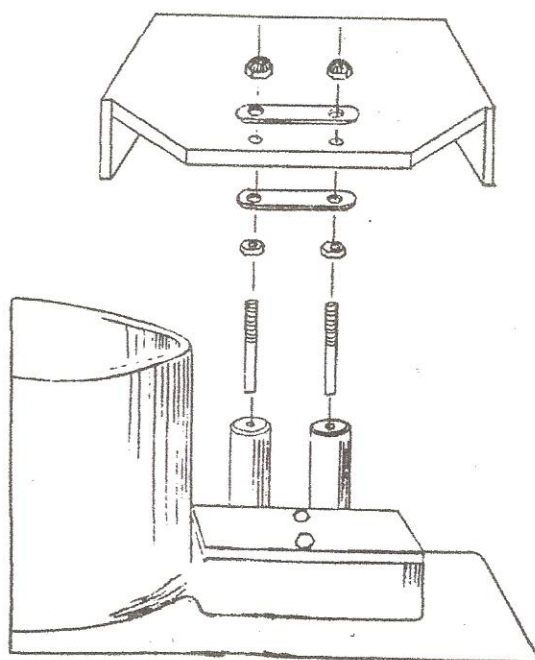
There are two items which must be mounted to the mold plate guard in order to put the machine into use.

#### Peg Assembly

Install regular nut on threaded pegs and turn until it stops. Place clamp support plate over nuts. Insert threaded section of pegs through the underside of the mold plate guard. This will leave a small amount of threaded peg showing through the top of the guard. Place second clamp support plate over the two pegs, then put on lock nuts and tighten slightly.



SPACER PLATE





Place entire guard and assembly into the guard posts on the hopper. This will locate proper center distance to the pegs. Use two 7/16" wrenches to tighten nuts while pegs are in the proper position.

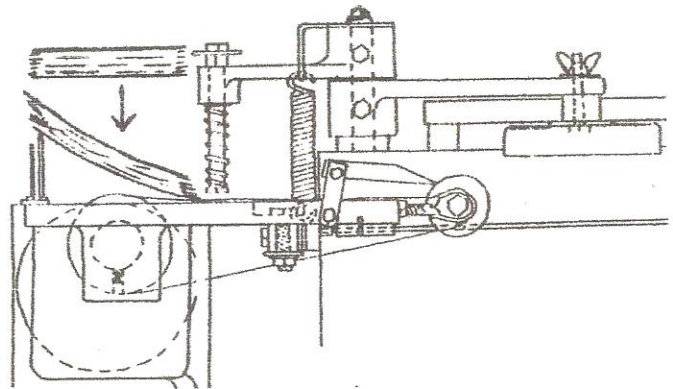
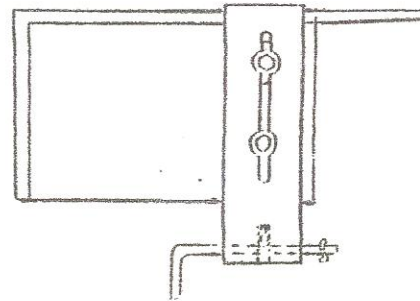
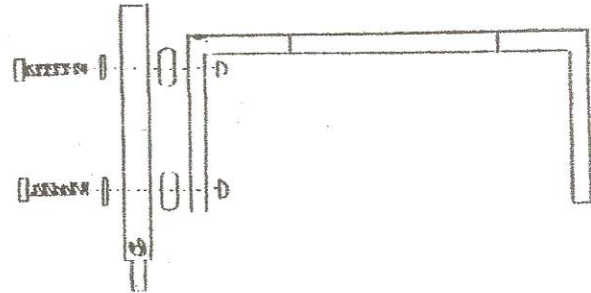
If procedure is followed properly, mold plate guard with peg assembly should lift straight out of the guard posts on the hopper and off the machine without the use of tools, thus increasing the ease of cleaning and reassembling for safety purposes.

### Push Rod Assembly

Install mold plate guard on machine using peg assembly. Insert both bolts through flat steel washers provided, then through slot in the push rod assembly, through rubber washers and finally through mold plate guard. Place lock nuts on bolts, make proper height adjustment and tighten bolts and nuts. By tightening one or the other bolt will change the position of the push rod to coincide with the hole in the cabinet and interlock switch.

After mounting mold plate guard, place feed tray on top of the hopper and machine is ready to use.

Take a stack of patty paper no thicker than 1" and place front end under pressure foot. Then lower back end of stack with hole over pin. This can be accomplished without stopping the machine. Placing any more than 1" of paper on the pin will cause improper paper feeding.



The Model 445 is equipped with a safety interlock. For the machine to operate, the push rod on the mold plate guard must be inserted in through the cabinet in order to activate the interlock switch.

Place product into the feed tray. Push through the openings of the feed tray guard and let fall into the hopper. DO NOT PUT HAND OR FINGERS OR OTHER FOREIGN MATERIAL SUCH AS STAMPERS OR PLUNGERS INTO THE HOPPER. THERE IS NO PLUNGER OR STAMPER SUPPLIED WITH THIS UNIT, NONE IS NEEDED. There is no need to pack the product in the hopper. Run the machine. As patties are formed and stacked, refill the hopper from the feed tray.

As the mold plate moves back and forth to form patties, a thin coating of product is spread over its surface. This coating may also accumulate on the edges of the k o cup or in front of the hopper and spacer plate.

NEVER ATTEMPT TO REMOVE THIS EXCESS COATING OR LEAKAGE WHILE THE MACHINE IS RUNNING. THE MOVING PARTS CAN CAUSE SEVERE AND PERMANENT INJURY.

MOLD PLATE CHANGE

Always disconnect the machine from its power source so that it cannot be accidentally started. Remove the "T" bolt from the back drive of the mold plate, and pull out mold plate from the rear of the machine. If changing thicknesses, also remove the spacer plate. Insert new plate(s) and replace "T" bolt. Important: K O Cup must also be changed to match the new mold plate.

When changing mold plate, use corresponding spacer plate. Spacer plates are retained with the use of the "X" bolt.

To make immediate repairs on the Model 445, we have included a spare parts kit, for your convenience. It contains the following parts:

- (2) 574-Air Valve
- (2) 562-Shear Pin
- (1) 610-5/16 Nut
- (1) 549-Pressure Plate Spring
- (1) 556-5/16-18 X 1" Bolt
- (1) 612-5/16 Flat Washer
- (1) 611-5/16 Lock Washer



TROUBLE SHOOTING TIPS

THE FOLLOWING IS A LIST OF POSSIBLE PROBLEMS THAT MAY ARISE AND THEIR SOLUTIONS:

- 1. Mold plate filling incorrectly, patty prematurely dropping out of the mold cavity:
  - a) the product should be chilled before molding.
  - b) the product may be too wet, soft or pasty. A binder such as bread crumbs should be used to dry product.
  - c) keep air groove clear of residue. It may cause mold plate cavity to become air locked.
  - d) the temperature in the room may be excessively hot.
  - e) operator should check to see if shear pin is properly in.
  - f) clean fat off the pressure plate.
  - g) operator should check to see if the feeder bolt is loose or if he forgot to insert the feeder washer.
  
- 2. Papering not feeding correctly or conveyor not working:
  - a) paper conveyor belt will not move:
    - 1. loosen belt (underside of belt should have 1" of play).
    - 2. take-up bearings should be lubricated with oil.
  
  - b) belt moves but paper skips:
    - 1. check to see if paper is defective.
    - 2. there may be too much grease on the belt.
  
  - c) belt moves but stops when pressure foot pushes on paper:
    - tighten conveyor belt with take-up nuts.
  
  - d) paper conveyor belt not tracking properly:
    - adjust front take-up nuts on front roller.
  
  - e) paper feed continuously instead of at intervals:
    - 1. paper stack is too high. Stack should only be 1".
    - 2. conveyor belt has become sticky. Clean belt.

ADJUSTABLE PRESSURE PLATE

The pressure plate length may be extended by turning the adjusting bolt deeper into the pressure plate housing. If the adjusting bolt has a sleeve over it, the sleeve must be shortened to allow the bolt to go in deeper.

Bolt should be adjusted so that the pressure plate does not start to move backward until it is completely under the blade of the feeder, the adjusting bolt is in too deep and should be backed out as is necessary for proper adjustment.

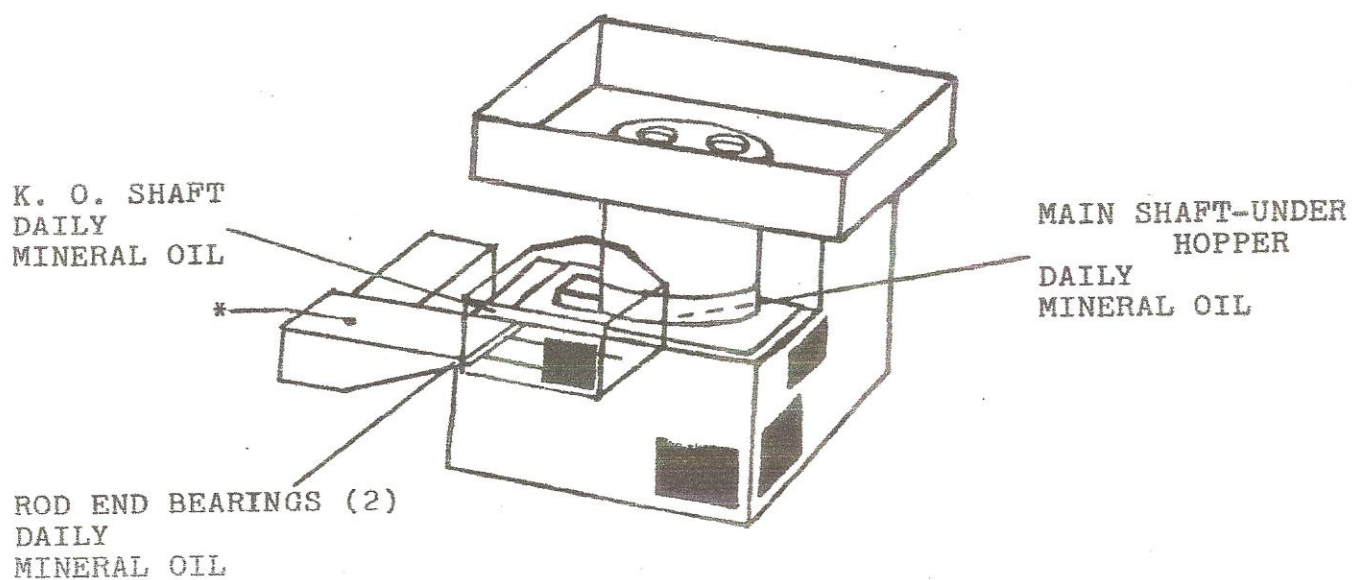
NOTE: A longer stop bolt can be used to replace the one normally supplied with the pressure plate. (Thread size 1/4-20-length determined by the result desired.)



MAINTENANCE  
DISCONNECT MACHINE BEFORE DOING ANY WORK ON IT

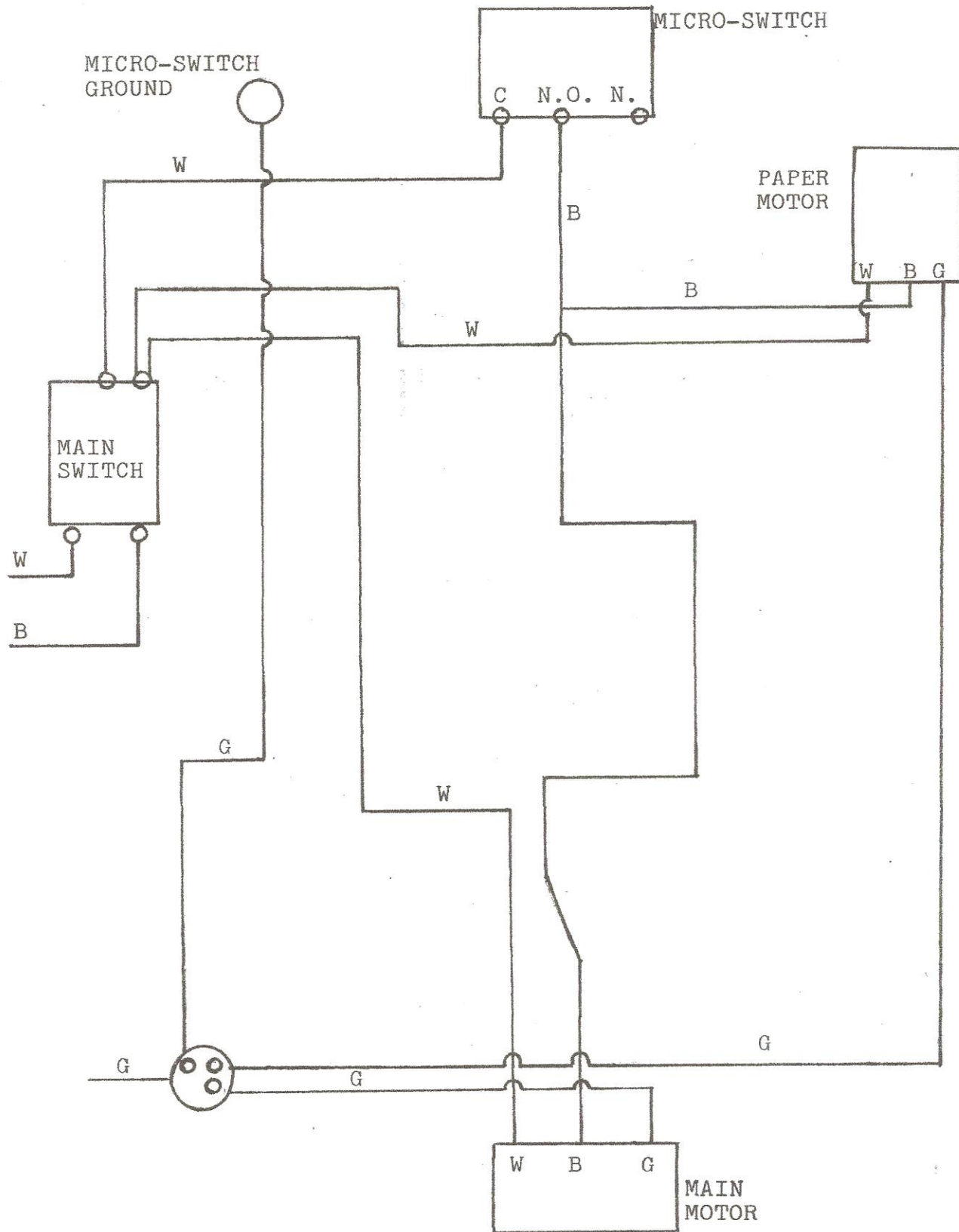
9

BE SURE WARNING DECALS  
ARE IN PLACE AND LEGI-  
BLE. SEE PARTS LIST  
FOR REPLACEMENTS.



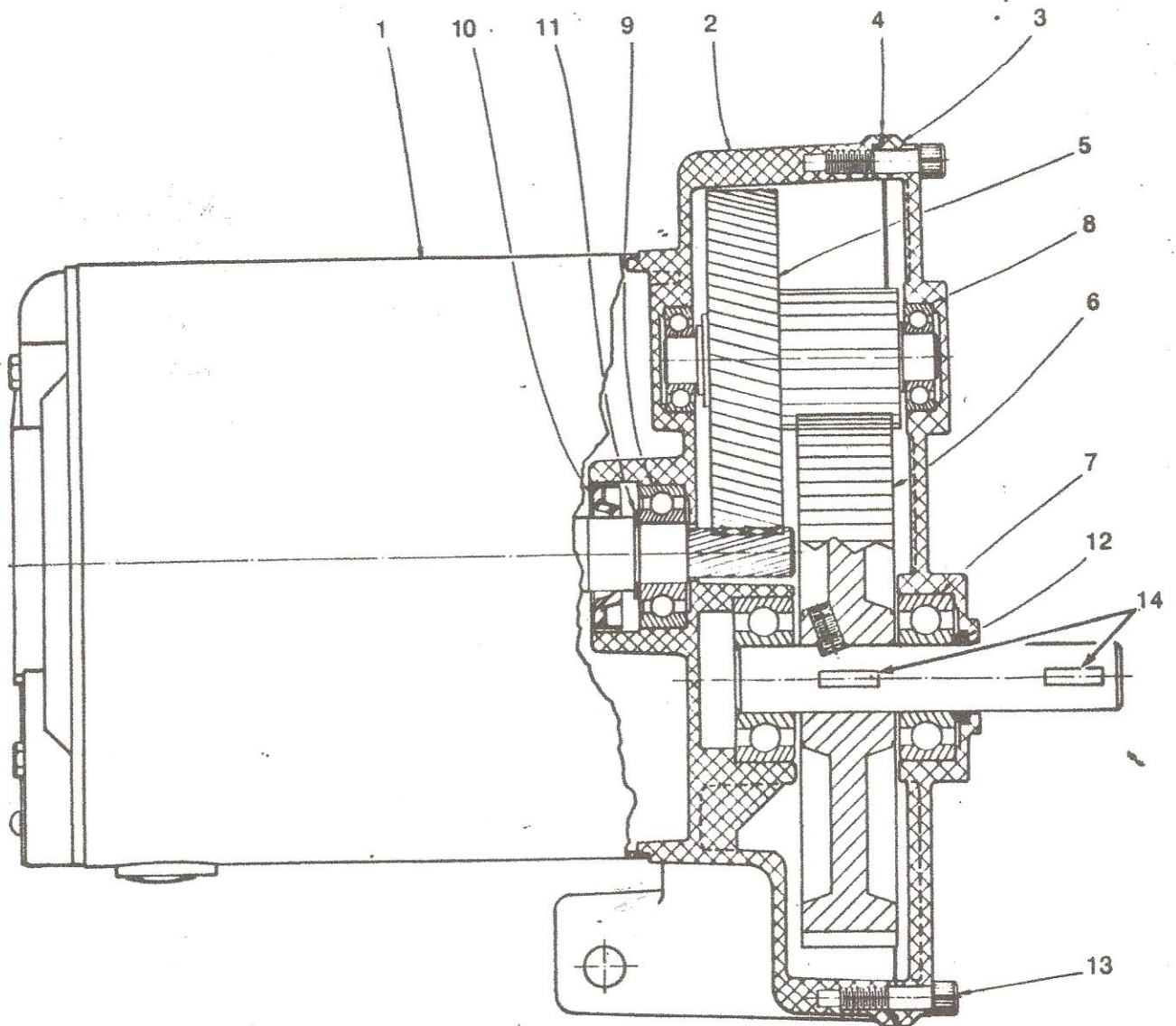
\* Mineral Oil, a non-abrasive cleaning solution is to be used to clean the conveyor belt to prolong life.

ELECTRICAL SCHEMATIC



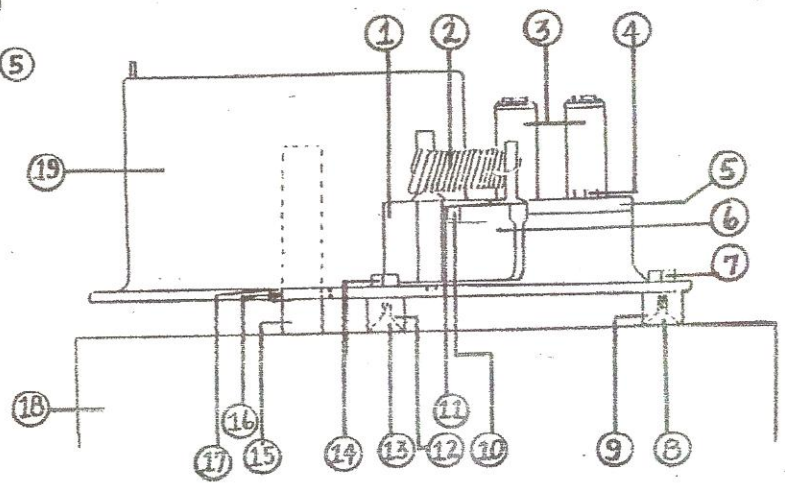
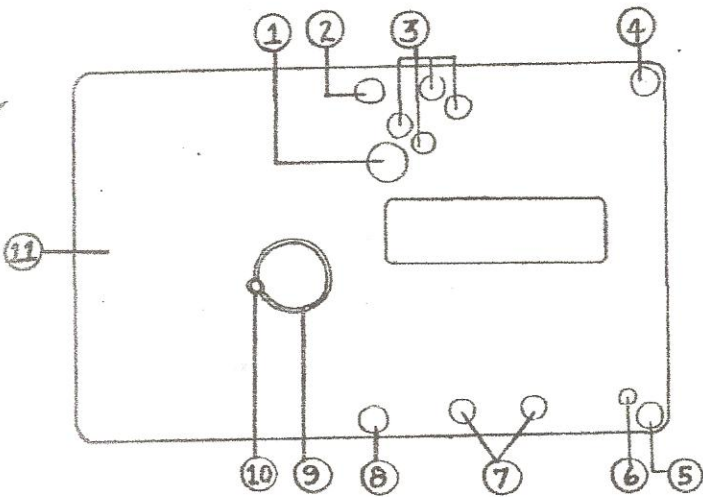


11



## Gear Head Motor

1	Motor assembly	V00212AX40
2	Gearcase	G01430-0005
3	Cover	G01431-0002
4	Gasket	P01475-0001
5	#2 Gear assembly	A03402-0001
6	Output gear assembly	A03403-0001
7	Bearing (Output)	L01792-0001
8	Bearing (#2 Gear assembly)	L01460-0001
9	Bearing (Motor)**	4X441
10	Seal	P01694-0003
11	Spacer washer	K07924-0001
12	'O' Ring	P00788-0001
13	Soc. Hd. Scr. (1/4-20x3/4)	*
14	Output shaft key	P00464-0001



Hopper - Bottom View

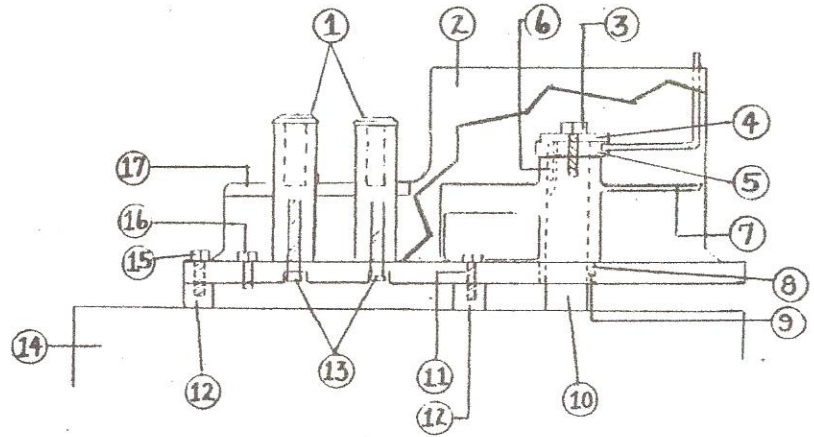
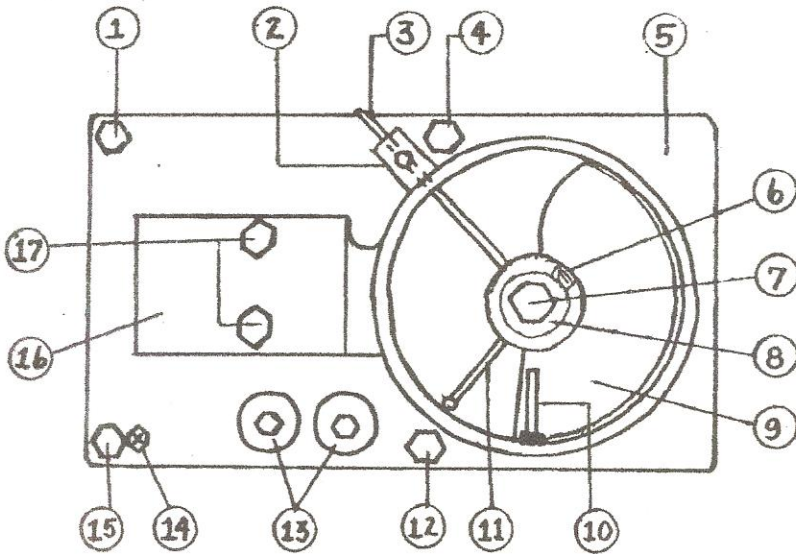
Hopper - Back View

ITEM	DESCRIPTION	QTY.	PART NO.
1	Hopper Threaded Plug	1	607
2	Hopper Hold Down Bolt	1	556
3	Block Screws	4	548
4	Hopper Hold Down Bolt	1	556
5	Hopper Hold Down Bolt	1	556
6	X Bolt	1	570
7	Mold Plate Guard Post Screws	2	551A
8	Hopper Hold Down Bolt	1	556
9	Hopper Nylon Bushing	1	603
10	Hopper Nylon Bushing Set Screw	1	604
11	Hopper Casting	1	545

ITEM	DESCRIPTION	QTY.	PART NO.
1	Pressure Plate Block	1	547
2	Pressure Plate Spring	1	549
3	Mold Plate Guard Posts	2	551
4	Hopper Casting Chamber Cover Bolts	2	545B
5	Hopper Casting Chamber Cover	1	545A
6	Pressure Plate	1	546
7	Hopper Hold Down Bolt	1	556
8	Mold Plate Guide Rail Bolt	1	495
9	Mold Plate Guide Rails	2	494
10	Pressure Plate Adjustment Bolt Collar	1	546B
11	Pressure Plate Adjustment Bolt	1	546A
12	Mold Plate Guide Rail	1	494
13	Mold Plate Guide Rail Bolts	1	495
14	Hopper Hold Down Bolt	1	556
15	Main Shaft	1	464
16	Hopper Nylon Bushing Set Screw	1	604
17	Hopper Nylon Bushing	1	603
18	Stainless Steel Machine Case	1	493
19	Hopper Casting	1	545



13

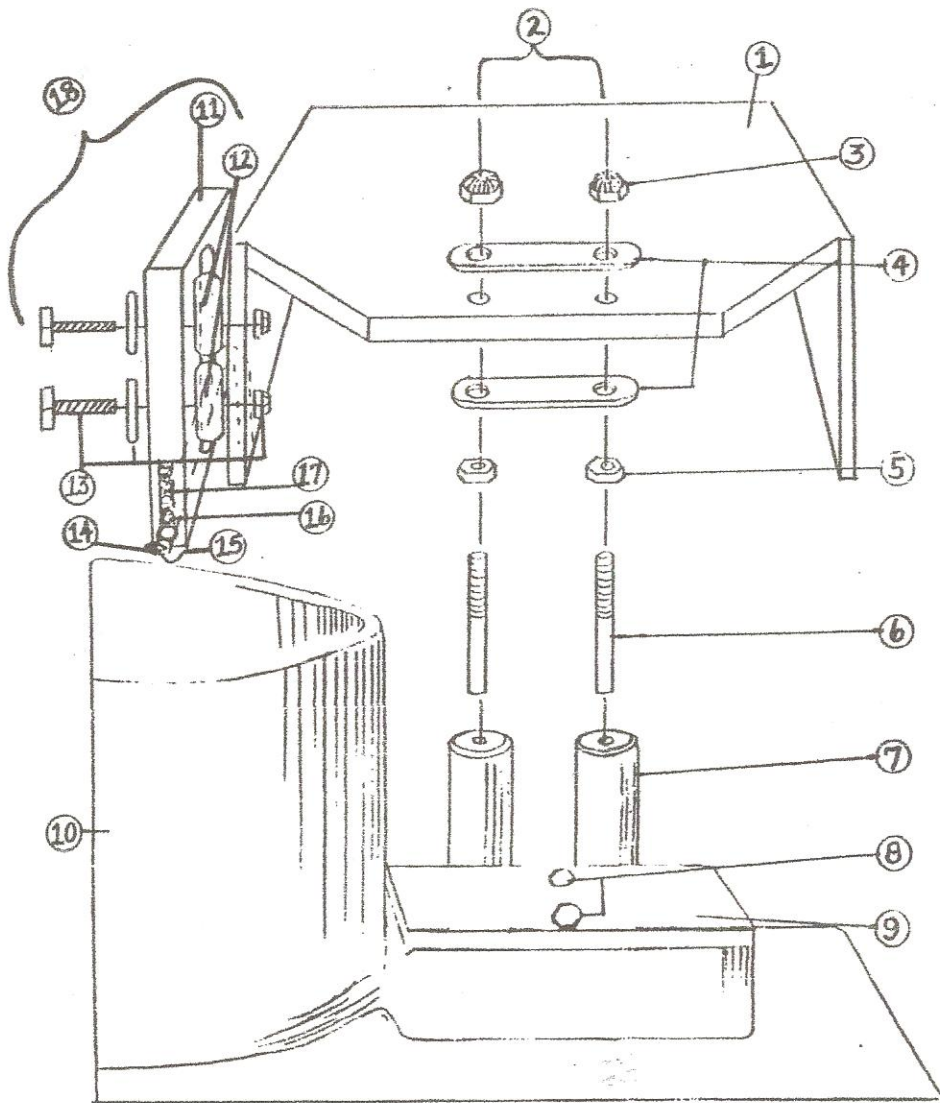


Hopper - Top View

Hopper - Front View

ITEM	DESCRIPTION	QTY.	PART NO.
1	Hopper Hold Down Bolt	1	556
2	Pressure Plate Block	1	547
3	Pressure Plate	1	546
4	Hopper Hold Down Bolt	1	556
5	Hopper Casting	1	545
6	Collar Set Screw	1	559
7	Feeder Bolt	1	561
8	Feeder Hold Down Cover	1	560
9	Feeder	1	557
10	Hopper Meat Stop & Nut	1	555
11	Feeder Mixer Collar	1	558
12	Hopper Hold Down Bolt	1	556
13	Mold Plate Guard Posts	2	551
14	X Bolt	1	570
15	Hopper Hold Down Bolt	1	556
16	Hopper Casting Chamber Cover	1	545A
17	Hopper Casting Chamber Cover Bolts	2	545B

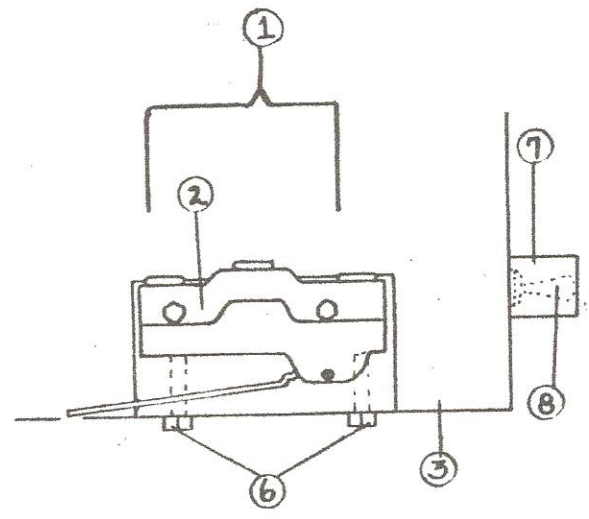
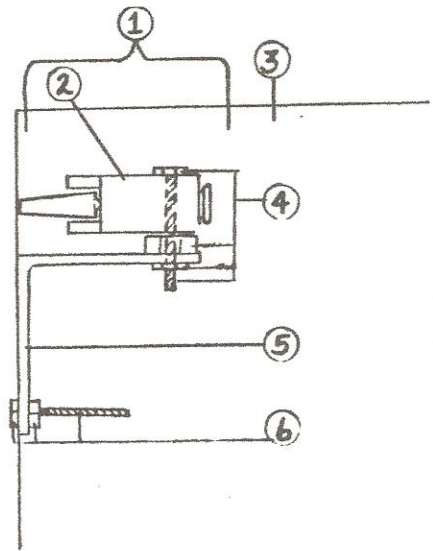
ITEM	DESCRIPTION	QTY.	PART NO.
1	Mold Plate Guard Posts	2	551
2	Hopper Casting	1	545
3	Feeder Bolt	1	561
4	Feeder Hold Down Cover	1	560
5	Feeder Mixer Collar	1	558
6	Shear Pin	1	562
7	Feeder	1	557
8	Hopper Nylon Rushing	1	603
9	Hopper Nylon Bushing Set Screw	1	604
10	Main Shaft	1	464
11	Hopper Hold Down Bolt	1	556
12	Mold Plate Guide Rails	2	494
13	Mold Plate Guard Post	2	551A
14	Stainless Steel Machine Case	1	493
15	Hopper Hold Down Bolt	1	556
16	X Bolt	1	570
17	Hopper Casting Chamber Cover	1	545A



# Mold Plate Guard Assembly

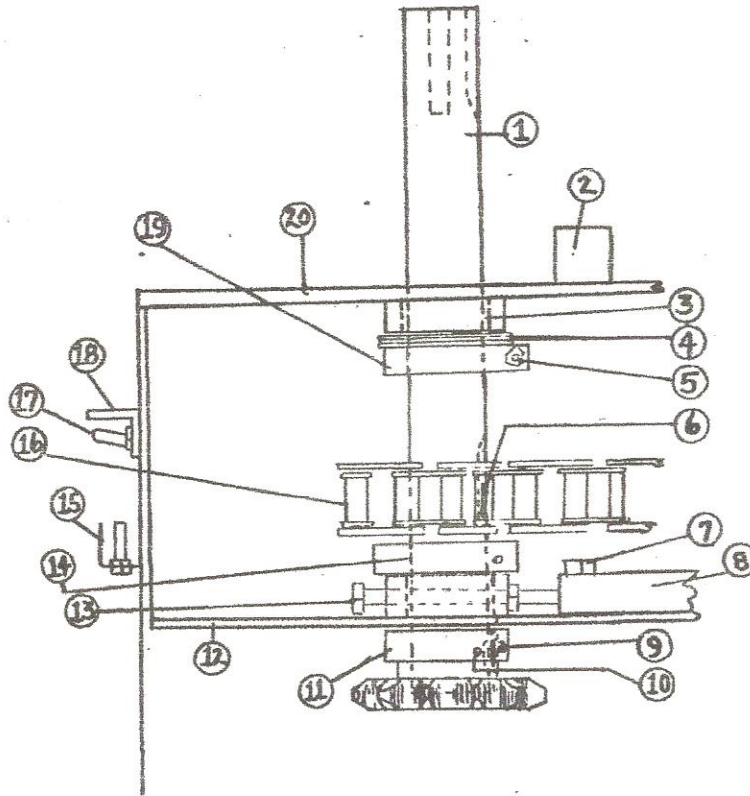
ITEM	DESCRIPTION	QTY.	PART NO.	ITEM	DESCRIPTION	QTY.	PART NO.
1	Mold Plate Guard	1	550	10	Hopper Casting	1	545
2	Peg Assembly	1	552	11	Push Rod Bracket	1	553-1
3	Lock Nuts	1	552-1	12	Rubber Washer	1	553-6
4	Clamp Support Plate	1	552-2	13	Push Rod Bracket Bolt, Washer, & Lock Nut	1	553-2
5	Hex Nuts	1	552-3	14	Rod	1	553-5
6	Threaded Pegs	1	552-4	15	Cotter Pin	1	553-7
7	Mold Plate Guard Post	1	551	16	Rearing	1	553-4
8	Hopper Casting Chamber Bolts	2	545B	17	Spring	1	553-3
9	Hopper Casting Chamber Cover	1	545A	18	Push Rod Assembly	1	553





# Interlock Switch Assembly

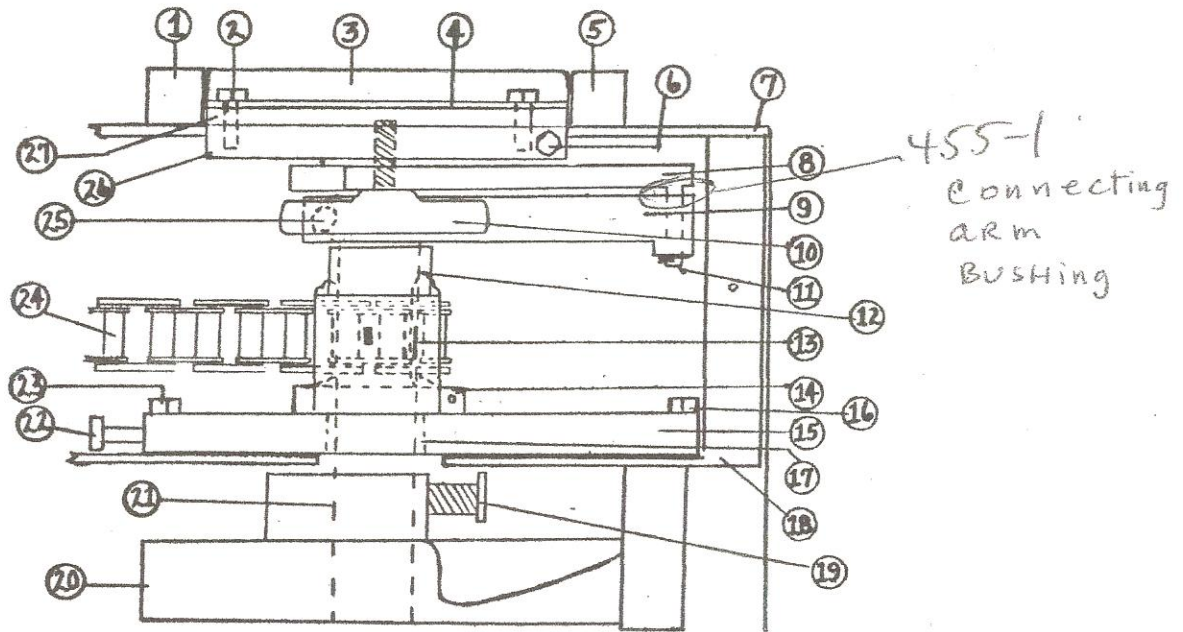
ITEM	DESCRIPTION	QTY.	PART NO.
1	Interlock Switch Assembly	1	608
2	Interlock Switch	1	608-1
3	Stainless Steel Machine Case	1	493
4	Switch Mounting Bolt, etc.	1	608-2
5	Bracket	1	608-3
6	Bracket Bolt, etc.	1	608-4
7	Toggle Switch Guard	1	501
8	Toggle Switch	1	500



# Main Shaft Assembly

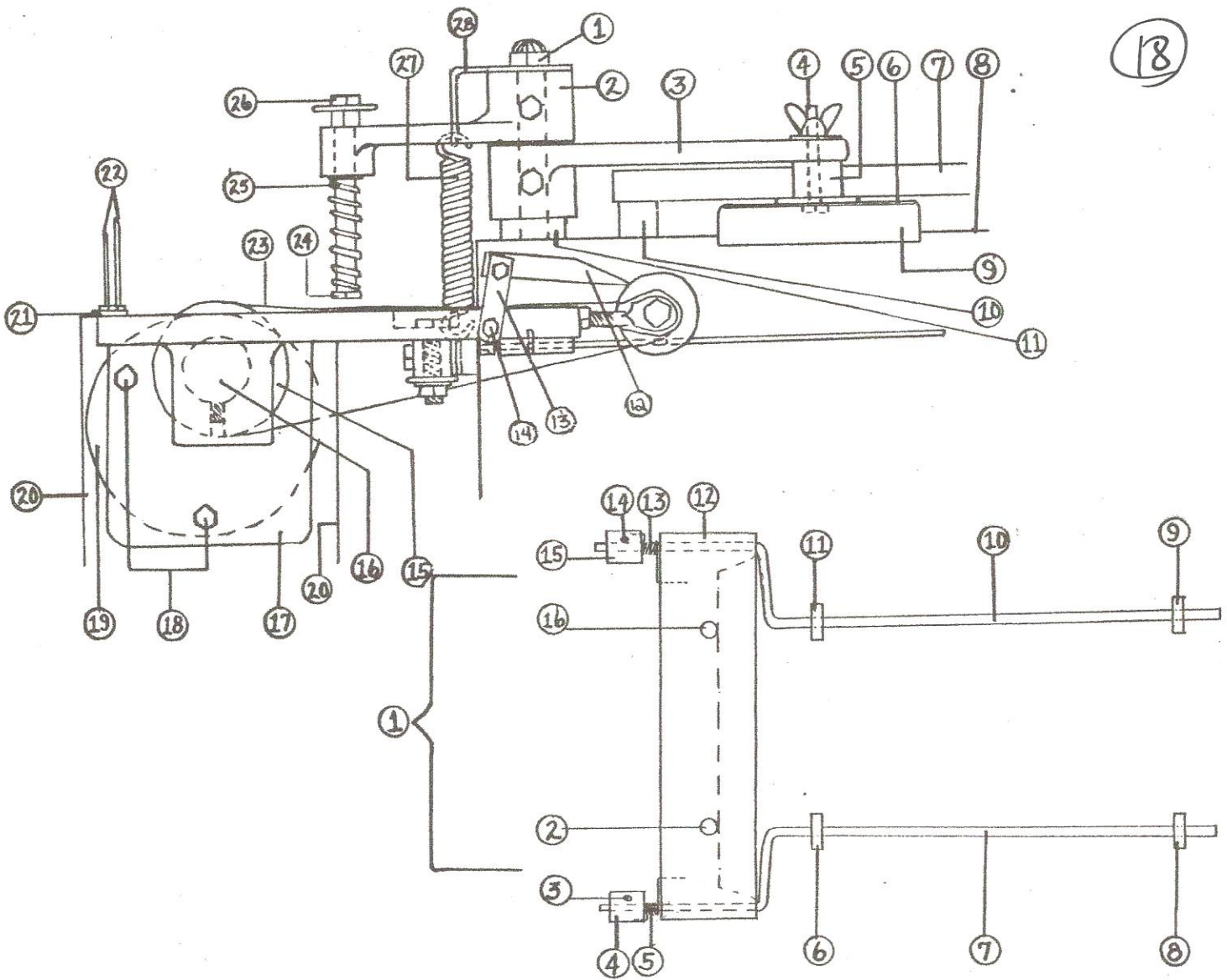
ITEM	DESCRIPTION	QTY.	PART NO.	ITEM	DESCRIPTION	QTY.	PART NO.
1	Main Shaft	1	464	11	Main Shaft Driven Sprocket	1	240
2	Mold Plate Guide Rails	2	494	12	Machine Housing	1	445
3	Main Shaft Bushing	1	470	13	Chain Slack Adjuster	1	463
4	Main Shaft Thrust Bearing	1	469		Bolts, Nuts		
5	Clamp Nuts & Bolt	1	468	14	Main Shaft Sprocket	1	465
6	Sprocket Key 1"	1	466	15	Tool Holder	1	501
7	Crank Shaft Nut, etc.	1	459	16	Master Chain & Link	1	471
8	Crank Shaft Housing	1	457	17	Toggle Switch	1	500
9	Main Shaft Driven Sprocket key 1"	1	241	18	Toggle Switch Guard	1	501
10	Main Shaft Driven Sprocket Set Screw	1	242	19	Main Shaft Clamp	1	467
				20	Stainless Steel Machine Case	1	493





# Crank Shaft Assembly

ITEM	DESCRIPTION	QTY.	PART NO.	ITEM	DESCRIPTION	QTY.	PART NO.
1	Mold Plate Guide Rail	1	494	15	Crank Shaft Housing	1	457
2	Clamp Bolt	1	568A	16	Crank Shaft Nuts, etc.	1	459
3	Spacer Plate	1	569	17	Crank Shaft Housing Bushing	1	458
4	Back Drive Clamp	1	568	18	Machine Housing	1	445
5	Mold Plate Guide Rail	1	494	19	Knock Out Cam Bolt	1	473
6	Back Drive Stop Bolt	1	565	20	Knock Out Cam	1	472
7	Stainless Steel Machine Case	1	493	21	Crank Shaft	1	456
8	Connecting Arm	1	455	22	Chain Slack Adjuster Bolt, nut	1	463
9	Crank Arm	1	452	23	Crank Shaft Nuts, etc.	1	459
10	T Bolt	1	567	24	Master Chain & Link	1	471
11	Connecting Arm Cotter Pin	1	455A	25	Crank Arm Bolt, etc.	1	453
12	Crank Arm Bushing	1	454	26	Mold Plate Back Drive	1	564
13	Sprocket Key 1/2"	2	461	27	Mold Plate	1	563-1
14	Crank Shaft Sprocket	1	460				



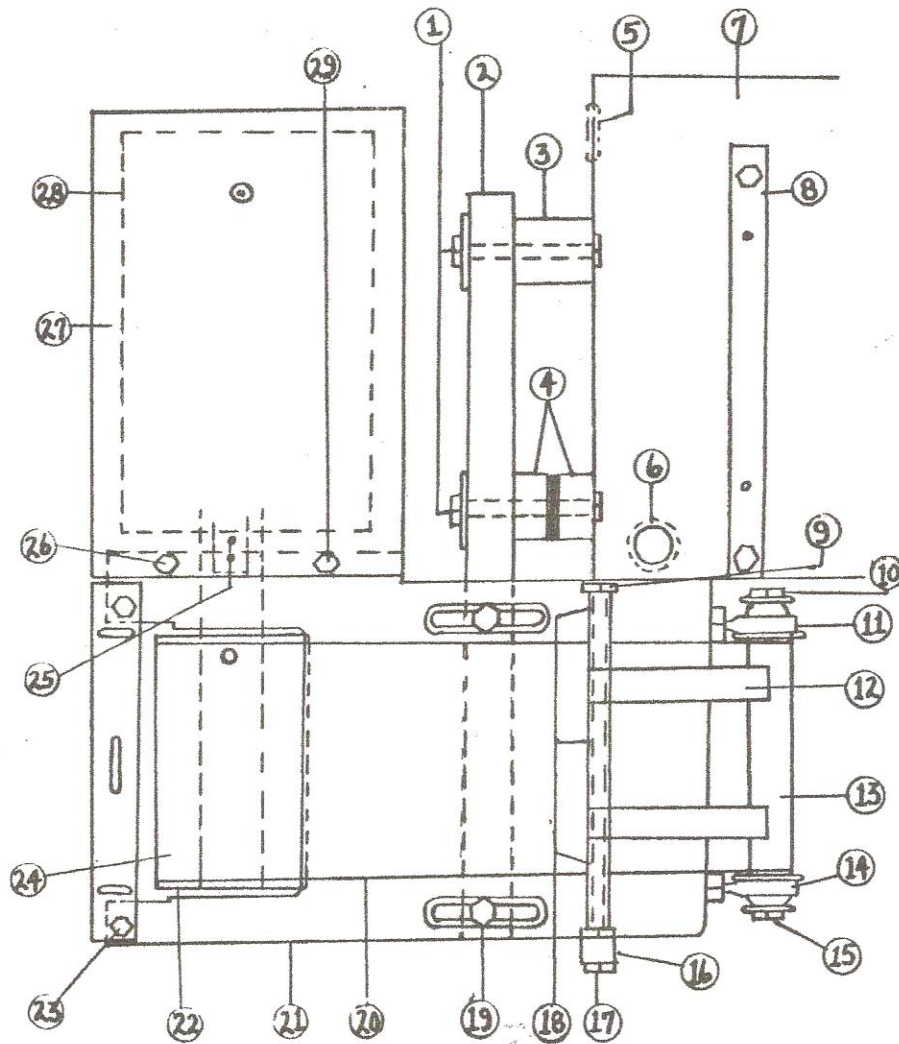
# Interleaver Assembly - Front View

ITEM	DESCRIPTION	QTY.	PART NO.	ITEM	DESCRIPTION	QTY.	PART NO.
1	Knock Out Shaft Nut	1	503	25	Pressure Bolt Spring	1	508
2	P.I. Arm & Bolt	1	505	26	Pressure Nuts & Washer	1	507
3	Knock Out Arm & Bolts	1	502	27	Knock Out Spring	1	490
4	Knock Out Cup Bolt	1	572				
5	Knock Out Cup Spacer	1	573				
6	Knock Out Cup Air Valve	1	574				
7	Hopper Casting	1	545				
8	Stainless Steel Machine Case	1	493				
9	Mold Plate Knock Out Cup	1	571				
10	Mold Plate Guide Rails	2	494				
11	K.O. Arm Rubber Bumper	1	504				
12	Weights	2	532				
13	Weight Shaft Support	1	529				
14	Weight Shaft Support Bolt	1	530				
15	P.I. Back Drive Pulley	1	520				
16	Motor Extension Shaft & Screw	1	517				
17	P.I. Casting Frame	1	519				
18	Motor Bolts, Nuts, etc.	1	518				
19	P.I. Motor	1	516				
20	Stainless Steel Interleaver	1	537				
21	Motor Cover	1	524				
22	Paper Pin Holder	1	524				
23	Paper Pin Nuts & Bolts	3	525				
24	Conveyor Belt	1	534				
25	Pressure Bolt	1	506				

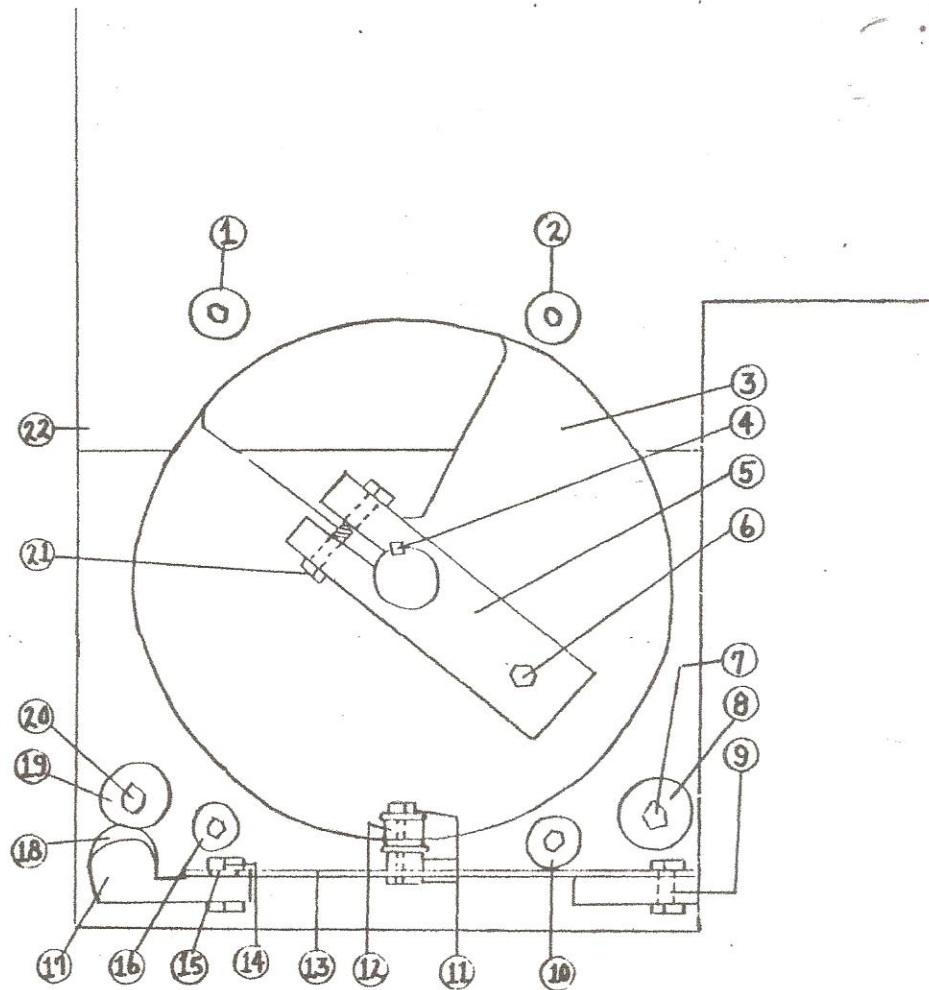
SPRING PAPER BRACKET ASSEMBLY			
1	Spring Paper Bracket Ay.	1	250
2	Mounting Bolts & Washers	1	249
3	Set Screw	1	245
4	Spring Adjusting Collar	1	244
5	Right Return Spring	1	246R
6	Paper Stop	1	248
7	Stainless Steel Paper Pivot Rod	1	247
8	Paper Stop	1	248
9	Paper Stop	1	248
10	Stainless Steel Paper Pivot Rod	1	247
11	Paper Stop	1	248
12	Pivot Rod Support Bracket	1	243
13	Left Return Spring	1	246L
14	Set Screw	1	245
15	Spring Adjusting Collar	1	244
16	Mounting Bolt & Washers	1	249





## Interleaver Assembly - Top View

ITEM	DESCRIPTION	QTY.	PART NO.	ITEM	DESCRIPTION	QTY.	PART NO.
1	P.A.S.B. Bolts, etc.	2	499	18	Weight Spacer Sleeves	2	531
2	Paper Attachment Support Bar	1	497	19	Interleaver Casting to Support Bar Bolts	2	539
3	P.A. Support Bar Spacer	1	498	20	Conveyor Belt	1	534
4	P.A. Support Bar 1/2" Spacer	2	498A	21	P.I. Casting Frame	1	519
5	Machine Back Romex Connector	1	496	22	P.I. Back Drive Pulley	1	520
6	Knock Out Bushing	1	462	23	Pin Holder Screws & Nuts	1	526
7	Stainless Steel Machine Case	1	493	24	Paper Pin Holder	1	524
8	Mold Plate Guide Rails	2	494	25	Motor Extension Shaft And Screw	1	517
9	Weight Shaft	1	527	26	Motor Cover Bolts	2	538
10	Pod End Nuts, Bolts, etc.	1	523	27	Stainless Steel Interleaver Motor Cover	1	537
11	Rod Ends	1	522	28	Paper Interleaver Motor	1	516
12	Weights	2	532	29	Motor Cover Bolts	2	538
13	Paper Interleaver Front Pulley	1	521				
14	Rod Ends	1	522				
15	Rod End Nuts, Bolts, etc.	1	523				
16	Weight Shaft Support	1	529				
17	Weight Shaft Nut	1	528				

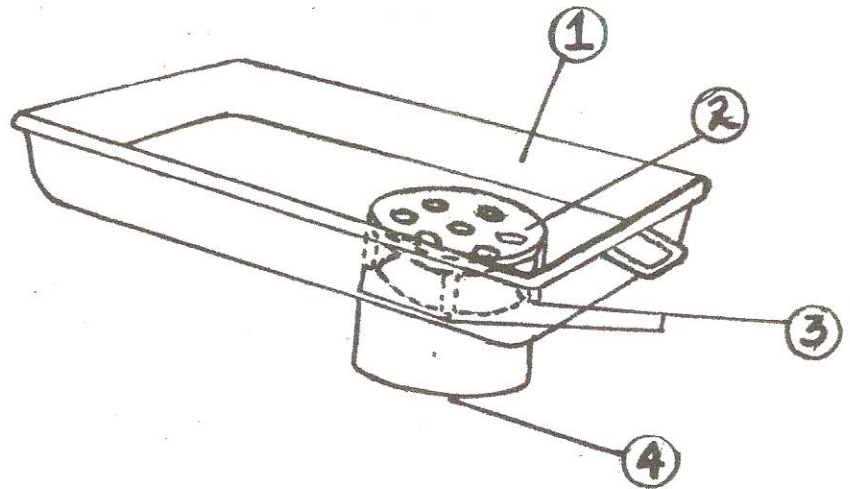
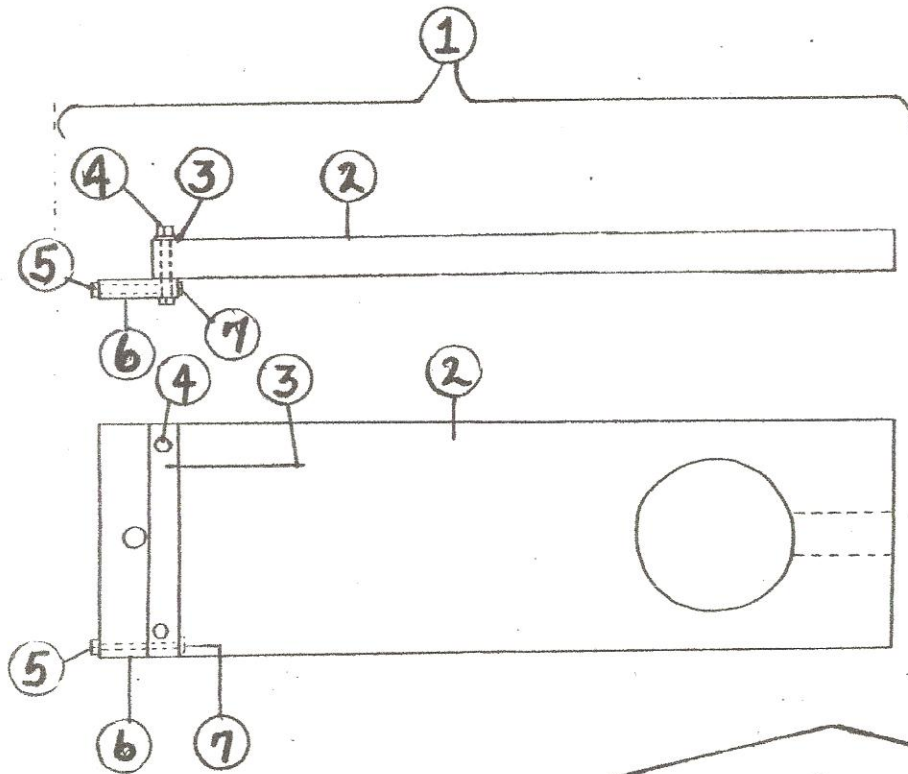


# K.O. Cam Assembly

## Bottom View

ITEM	DESCRIPTION	QTY.	PART NO.	ITEM	DESCRIPTION	QTY.	PART NO.
1	Crank Shaft Nuts, etc.	1	459	12	Cam Yoke Roller Bearing	1	474
2	Crank Shaft Nuts, etc.	1	459	13	Knock Out Lever	1	450
3	Knock Out Cam	1	472	14	Knock Out Lever Bushing	1	450B
4	Drive Bar Key	1	477		Bolt, etc.		
5	Knock Out Cam Drive Bar	1	476	15	Knock Out Lever Bushing	1	450A
6	Drive Bar to Knock Out Cam Support Bolt	1	479	16	Crank Shaft Nuts, etc.	1	459
7	Leg Bolts & Washers	1	447	17	Knock Out Shaft	1	449
8	Legs	1	446	18	Knock Out Bushing	1	462
9	Knock Out Lever Bolts & Washers	1	451	19	Legs	1	446
10	Crank Shaft Nuts, etc.	1	459	20	Leg Bolts & Washers	1	447
11	Cam Bearing Spacer Bolt, Nut, etc.	1	475	21	Drive Bar Nuts, Bolts, etc.	1	478
				22	Machine Housing	1	445





## Mold Plate Assembly

ITEM	DESCRIPTION	QTY.	PART NO.
1	Mold Plate Assembly	1	563
2	Mold Plate	1	563-1
3	Back Drive Clamp	1	568
4	Clamp Bolt	1	568A
5	Stop Bolt, Nut & Washer	1	566
6	Mold Plate Back Drive	1	564
7	Back Drive Stop Bolt	1	565

## Pan Assembly

ITEM	DESCRIPTION	QTY.	PART NO.
1	Feed Pan	1	541P
2	Feed Tray Guard	1	542
3	Guard Bolts, Washers	3	543
4	Feed Tray Stainless Flange Tube	1	554

ELECTRICAL CORD/PLUG GROUPS

	<u>ITEM</u>	<u>QUANTITY</u>	<u>PART NUMBER</u>
115V., 1Ph., 50/60 Hz.	Power Cord Assembly	1	115-01
	Plug	1	115-02
	Cord Assembly-Main Motor	1	115-03
	Cord Assembly-Paper Motor	1	115-04
	Cord Assembly-Safety Switch	1	115-05

	<u>ITEM</u>	<u>QUANTITY</u>	<u>PART NUMBER</u>
220V., 1Ph., 50/60 Hz.	Power Cord Assembly	1	220-01
	Plug	1	Customer supplies
	Cord Assembly-Main Motor	1	220-02
	Cord Assembly-Paper Motor	1	220-03
	Cord Assembly-Safety Switch	1	220-04

*Patty - O - Matic*®  
(WORLD'S FINEST FOOD MACHINES)  
Route 547 - P. O. Box 404  
Farmingdale, New Jersey 07727  
(732) 938-2757